



**King®**

Airless Sprayers for  
Protective Coating Applications



PROVEN QUALITY. LEADING TECHNOLOGY.

Graco airless sprayers have been the industry's preferred brand for over 60 years. When looking for a reliable, durable and rugged single-component protective coating pump to get the job done – Graco has you covered.







## REGISTER YOUR KING UNIT AND GET A 2-YEAR WARRANTY!

Find the warranty tag on your brand new King unit and go  
to **[www.graco.com/kingrules](http://www.graco.com/kingrules)**

Simply follow the steps of the procedure and receive  
confirmation of your 2-year warranty.

# TRUST THE BRAND

THAT NEVER LETS YOU DOWN

The King fully loaded and ready  
to tackle your toughest job.

#### *Exposed Thermally Isolated Poppets*

---

- Accessible for service

#### *Accessory Box*

---

- Conveniently mounted on cart
- Store your day-to-day essential tools and parts

#### *Protective Rod Guard*

---

- Prevent any potential pinch-point injuries while pump is in motion
- Keeps debris out of throat wet cup

#### *Xtreme® Lowers - (MaxLife™ shown)*

---

- Easy to maintain with quick knockdown
- New packings for better sealing
- Available in longer lasting MaxLife™

#### *Improved Siphon Hose*

---

- Shorter length for easy clean up
- Save flush material
- Less material waste





### *De-icing Valve*

- Reduces main valve icing

### *Trusted XL Motor*

- Sharp, smooth changeovers
- Low pulsation, even with multiple guns
- Removable cover for valve maintenance

### *Robust Air Controls*

- High capacity filter regulator
- Lubricator option for extreme operating conditions

### *Cart with Wheels*

- For portability and easy maneuverability
- Flat-free tyres

Sprayers require simple maintenance – we've made it easy.

A factory installed toolbox contains common items that every applicator should have on the job site. Contents include throat seal liquid, air filter element, tool for poppet and air valve, pump filter cap O-rings, pump filter element, spare tip and gun filter.

The box also includes storage space for your Graco XTR™ Spray Gun.

# SIMPLE MAINTENANCE

*with removable valve cover and  
easy access to poppet valves.*









Thermally isolated poppets\* are insulated from motor castings that can often drop below freezing temperatures. The newly designed poppets and external pilot lines virtually eliminate pilot valve freezing that can result in an instant stop. The components are easily accessed for service or replacement if needed.

*\*Thermally isolated poppets used on XL 3400 and XL 6500 motors only.*

# REDUCED ICING POTENTIAL

by **up to 70%** with thermally isolated poppets.



“We like the King pump,  
we can’t break it, it will not freeze!”

*- Hunnicut’s Incorporated*



**W**ith 145% higher intake/exhaust capacity in the air valve compared to NXT™ motors you'll achieve a faster, smoother changeover. The faster the air gets out, the faster the pressure comes back. Eliminating the “wink” in your pattern – it is a difference you will feel.



# LESS PULSATION

due to **smoother changeover** and no pressure drops,  
resulting in a better finish!



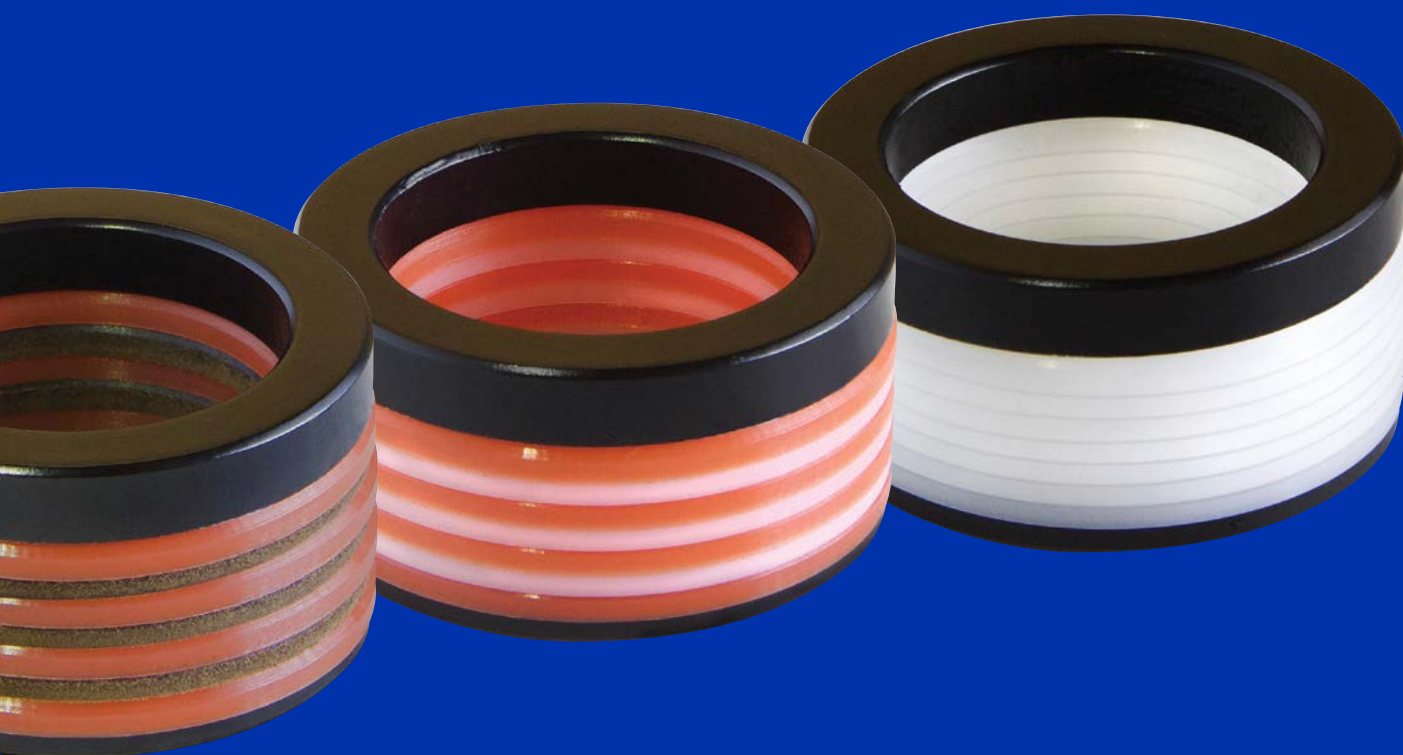


“The King sprayer feels stronger than any pump I’ve ever used...”

*- Tom Rathousky, Morin Industrial Coatings*

**P**ackings play a critical role in optimising spray performance by sealing pressure and holding material inside the pump. The tighter the seal, the better the performance.

- Graco UHMWPE is RED
- Reinforced PTFE is WHITE
- Packing glands are BLACK



“Whatever you did works... I haven’t experienced throat leakage with these new packings and I’ve been using pumps for 42 years.”

- Dave McAnany, sub-contractor for Worldwide Industries





# IMPROVED SEALING AND STRENGTH

with enhanced edge loading and  
seven throat packings instead of five.



**MaxLife™** pumps are designed for the most demanding jobs, providing unmatched durability and life.

- Exclusive MaxLife™ sleeve rod
- Lasts up to 6-times longer
- Long-life ceramic balls for maximum versatility no matter what you're spraying (optional kit)
- Standard 2-line outlet



---

#### *Built-in Filter*

- Easy to maintain or remove

---

#### *Zero Cavity Carbide Prime/Bleed Valve*

- Less maintenance and no material build-up

---

#### *Zero Cavity 2nd Gun Outlet*

- Allowing no material build-up when not in use

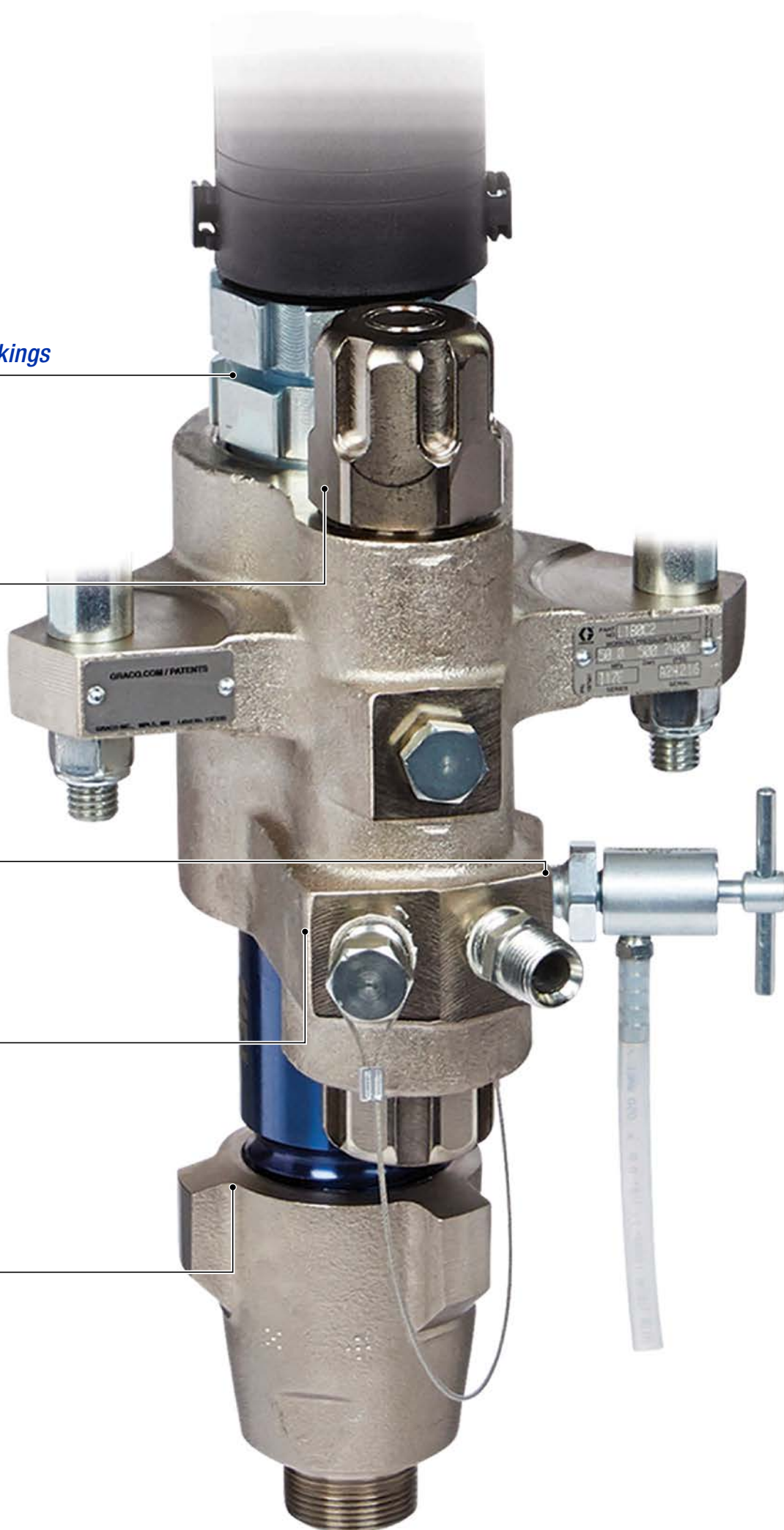
---

#### *Quick Knockdown Intake Valve and Cylinder*

- Easy to service with minimal tools

### *Cartridge-style Throat Packings*

- Quickly remove and replace for service



Graco's powerful new air motor lets you use multiple guns with almost no perceivable pulsation. A new manifold has been designed to simplify the installation of multiple guns.

# MULTI-GUN CAPABILITIES

With more powerful and efficient changeovers,  
the ability to spray with up to six guns\* is now a reality.

\* Depending on material, hose and tip size.

“We spray with two guns most days. The King pump has so much power, it has no problem keeping up.”

- Cory Coles, Darran Green Sandblasting





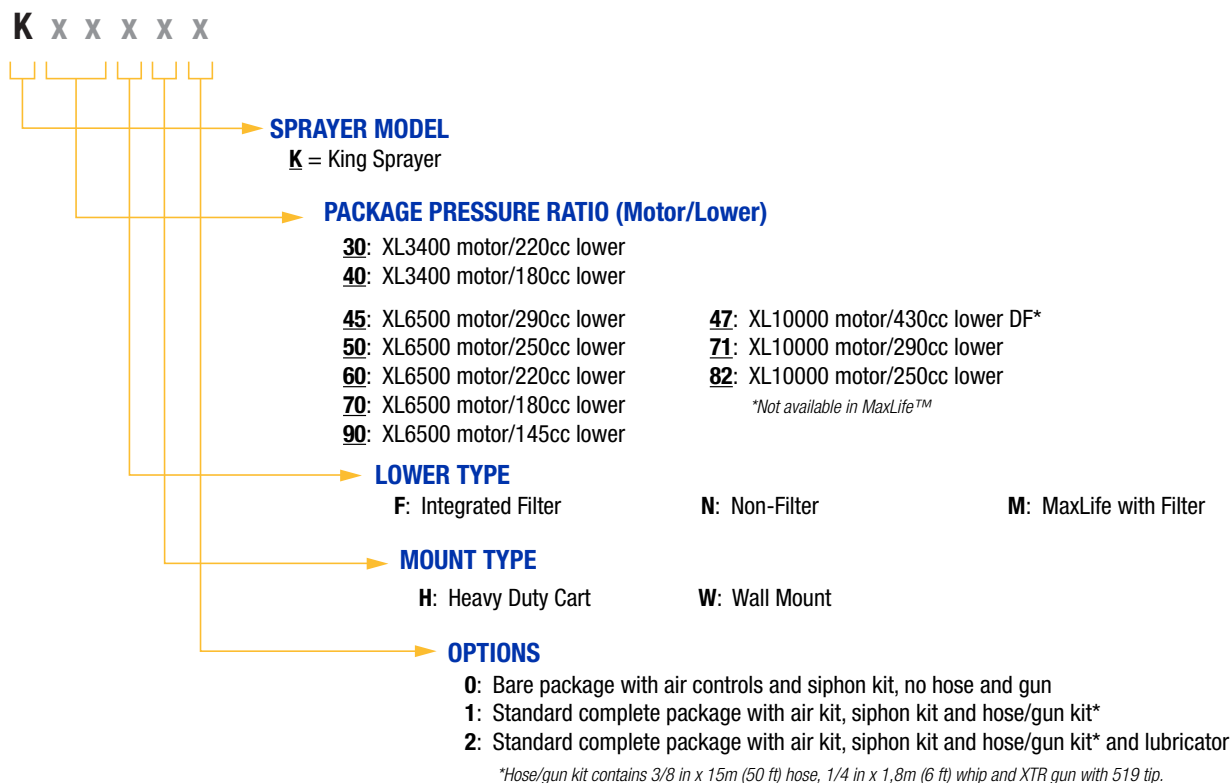


# Ordering Information

Graco King airless sprayers are built with your needs in mind.  
Depending on your job requirements – Graco has you covered.

Use the matrix below to create your part number.

*Not all combinations are available, contact your Graco Distributor for part number availability.*



MOTOR PACKAGE	XL3400 MOTOR		XL6500 MOTOR					XL10000 MOTOR		
KING SPRAYER MODEL	XL30-220	XL40-180	XL45-290	XL50-250	XL60-220	XL70-180	XL90-145	XL45-430 <sup>†</sup>	XL70-290	XL80-250
Output per cycle	220cc	180cc	290cc	250cc	220cc	180cc	145cc	430cc	290cc	250cc
Maximum Working Pressure, bar (psi, MPa)	217 (3150, 21.7)	262 (3800, 26.2)	313 (4550, 31.3)	359 (5200, 35.9)	417 (6000, 41.7)	500 (7250, 50.0)	500 (7250, 50.0)	331 (4800, 33.1)	500 (7250, 50.0)	500 (7250, 50.0)
Maximum Air Input Pressure, bar (psi, MPa)	7 (100, .07)	7 (100, .07)	7 (100, .07)	7 (100, .07)	7 (100, .07)	7 (100, .07)	5.5 (80, .55)	7 (100, .07)	7 (100, .07)	6 (88, .60)
Output at 60 Cycles/min lpm (gpm)	12.9 (3.4)	11 (2.9)	17 (4.6)	15.2 (4.0)	12.9 (3.4)	11 (2.9)	8.7 (2.3)	25.4 (6.7)	17.4 (4.6)	15.1 (4)

For more information on Parts & Accessoires for high Pressure Protective Coating Equipment, see brochure 349392

<sup>†</sup> Uses Dura-Flo™ lower

## King Heavy-Fluid, high pressure spray packages use XL10000 motor

Designed for gravity feed materials, with high viscosity and filled, requiring a filter-less pump lower for less plugging. Packages include 10 gal (38 L) SST hopper, no fluid filter, 3/4 in outlet check valve, 3/4 in x 50 ft (15 m) hose, 1/2 in x 25 ft (7.6 m) whip and XHF spray gun with 429 tip.

**24X593** King XL70-290 Heavy-fluid\* spray package

**24X594** King XL80-250 Heavy-fluid\* spray package

\*Heavy-fluid materials vary and should be tested with a qualified distributor. Material should be pourable and self-levelling.

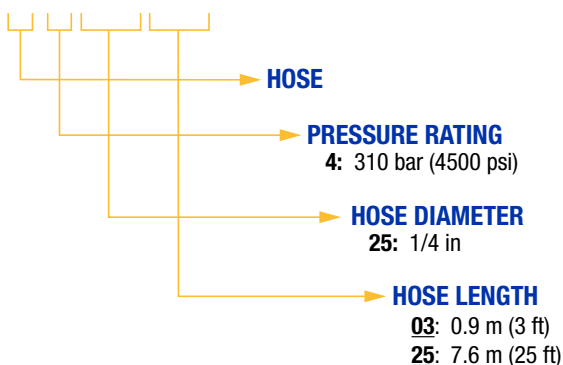
## Parts & Accessories

### King Sprayer Accessories

<b>24X552</b>	DataTrak kit for XL 3400, XL 6500, XL 10000 motors, no runaway solenoid	<b>202659</b>	Air motor lubricator oil
<b>24X550</b>	DataTrak kit for XL 3400, XL 6500, XL 10000 motors, with runaway solenoid	<b>17V322</b>	Low Noise Motor Conversion Kit for XL 3400 & XL 6500 Motors
<b>116635</b>	Air filter element	<b>24X570</b>	10-gal SST hopper kit for XL 3400, XL 6500, XL 10000 pkgs.
<b>244841</b>	King Cart Lubricator Kit	<b>17V587</b>	4-gun spray line manifold with ball valves, no independent flush
		<b>262826</b>	Gun Splitter, 2 guns, with independent flush
		<b>206994</b>	Throat Seal Liquid (TSL)

### Xtreme-Duty Airless Hose & Adapters (for adding additional spray line)

H X X X X X



*Example:*

*H53850 is a 386 bar (5600 psi), 3/8 in, 15.2 m (50 ft) hose*

<b>5:</b> 386 bar (5600 psi)	<b>7:</b> 500 bar (7250 psi)
<b>38:</b> 3/8 in	<b>50:</b> 1/2 in
<b>06:</b> 1.8 m (6 ft)	<b>10:</b> 3 m (10 ft)
<b>50:</b> 15.2 m (50 ft)	<b>1X:</b> 30.5 m (100 ft)

### Hex Reducing Nipples (for adapting hoses together)

<b>164672</b>	500 bar (7250 psi, 50 MPa), 3/8 npt (m), 1/4 npsm	<b>158491</b>	510 bar (7400 psi, 51 MPa), 1/2 npt (m), 1/2 npt (m)
<b>156849</b>	500 bar (7250 psi, 50 MPa), 3/8 npt (m), 3/8 npt (m)	<b>159239</b>	510 bar (7400 psi, 51 MPa), 1/2 npt (m), 3/8 npt (m)
<b>162449</b>	510 bar (7400 psi, 51 MPa), 1/2 npt (m), 1/4 npt (m)	<b>162453</b>	517 bar (7500 psi, 51.7 MPa), 1/4 npt (m), 1/4 npt (m)

### XTR-5™ Airless Spray Guns

Maximum working pressure: 345 bar (5000 psi, 34.5 MPa)

<b>XTR500</b>	Round handle, four-finger trigger, no tip
<b>XTR501</b>	Round handle, four-finger trigger, 519 flat tip
<b>XTR502</b>	Oval-insulated handle, four-finger trigger, 519 XHD RAC tip
<b>XTR503</b>	Oval-insulated handle, two-finger trigger, 519 XHD RAC tip
<b>XTR504</b>	Round handle, four-finger trigger, 519 XHD RAC tip
<b>XTR505</b>	Round handle, two-finger trigger, 519 XHD RAC tip

### XTR-7™ Airless Spray Guns

Maximum working pressure: 500 bar (7250 psi, 50.0 MPa)

<b>XTR700</b>	Round handle, four-finger trigger, no tip
<b>XTR701</b>	Round handle, four-finger trigger, 519 flat tip
<b>XTR702</b>	Oval-insulated handle, four-finger trigger, 519 XHD RAC tip
<b>XTR703</b>	Oval-insulated handle, two-finger trigger, 519 XHD RAC tip
<b>XTR704</b>	Round handle, four-finger trigger, 519 XHD RAC tip
<b>XTR705</b>	Round handle, two-finger trigger, 519 XHD RAC tip

### Heater Kits (to reduce viscosity and improve cure times)

**17V573** Kit, Heater Installation. Includes hardware for mounting any Viscon HP or HF fluid heater to a King Heavy-Duty cart.

### High Pressure Viscon® Fluid Heaters, Non-Hazardous Location

Ref. manual 309524

<b>245867</b>	120 VAC, 2300 watts, 19.2 amps, 500 bar (7250 psi)
<b>245868</b>	200 VAC, 4000 watts, 20.0 amps, 500 bar (7250 psi)
<b>245869</b>	240 VAC, 4000 watts, 16.7 amps, 500 bar (7250 psi)
<b>245870</b>	480 VAC, 4000 watts, 8.3 amps, 500 bar (7250 psi)
<b>246276</b>	380 VAC, 4000 watts, 10.5 amps, 500 bar (7250 psi)

### High Pressure Viscon® Fluid Heaters, Hazardous Location

Ref. manual 309524

<b>245848</b>	120 VAC, 2300 watts, 19.2 amps, 500 bar (7250 psi)
<b>245862</b>	200 VAC, 4000 watts, 20 amps, 500 bar (7250 psi)
<b>245863</b>	240 VAC, 4000 watts, 16.7 amps, 500 bar (7250 psi)
<b>246254</b>	380 VAC, 4000 watts, 10.5 amps, 500 bar (7250 psi)
<b>245864</b>	480 VAC, 4000 watts, 8.3 amps, 500 bar (7250 psi)

### Viscon® HF, High Flow Fluid Heaters, Non-Hazardous Location

Ref. manual 3A2954

<b>24P016</b>	240 VAC, 5400 watts, 22.5 amps
---------------	--------------------------------

### Viscon® HF, High Flow Fluid Heaters, Hazardous Location

Ref. manual 309524

<b>24W248</b>	240 VAC, 5400 watts, 22.5 amps, 500 bar (7250 psi)
---------------	--

### Service Manuals online at [www.graco.com](http://www.graco.com)

<b>3A5422</b>	King sprayers with XL 3400 or XL 6500 Air Motors - manual 3A5422
<b>334645</b>	King sprayers with XL 10000 Air Motor - manual 334645
<b>3A5423</b>	XL 3400, XL 6500 Motor Parts - manual 3A5423

<b>334644</b>	XL 10000 Motor Parts - manual 334644
<b>311762</b>	Xtreme Lower Parts & Repair Kits - manual 311762
<b>311762</b>	Ceramic ball check kits - manual 311762





## ABOUT GRACO

Founded in 1926, Graco is a world leader in fluid handling systems and components. Graco products move, measure, control, dispense and apply a wide range of fluids and viscous materials used in vehicle lubrication, commercial and industrial settings.

The company's success is based on its unwavering commitment to technical excellence, world-class manufacturing and unparalleled customer service. Working closely with qualified distributors, Graco offers systems, products and technology that set the quality standard in a wide range of fluid handling solutions. Graco provides equipment for spray finishing, protective coating, paint circulation, lubrication, and dispensing sealants and adhesives, along with power application equipment for the contractor industry. Graco's ongoing investment in fluid management and control will continue to provide innovative solutions to a diverse global market.

## GRACO LOCATIONS

### MAILING ADDRESS

P.O. Box 1441  
Minneapolis, MN 55440-1441  
Tel: 612-623-6000  
Fax: 612-623-6777

### AMERICAS

#### MINNESOTA

Worldwide Headquarters  
Graco Inc.  
88-11th Avenue N.E.  
Minneapolis, MN 55413

### EUROPE

#### BELGIUM

European Distribution Center  
Graco Distribution BVBA  
Industrieterrein-Oude Bunders  
Slakweidestraat 31  
3630 Maasmechelen,  
Belgium  
Tel: 32 89 770 700  
Fax: 32 89 770 777

### ASIA PACIFIC

#### AUSTRALIA

Graco Australia Pty Ltd.  
Suite 17, 2 Enterprise Drive  
Bundoora, Victoria 3083  
Australia  
Tel: 61 3 9468 8500  
Fax: 61 3 9468 8599

#### CHINA

Graco Hong Kong Ltd.  
Shanghai Representative Office  
Building 7  
1029 Zhongshan Road South  
Huangpu District  
Shanghai 200011  
The People's Republic of China  
Tel: 86 21 649 50088  
Fax: 86 21 649 50077

### INDIA

Graco Hong Kong Ltd.  
India Liaison Office  
Room 432, Augusta Point  
Regus Business Centre 53  
Golf Course Road  
Gurgaon, Haryana  
India 122001  
Tel: 91 124 435 4208  
Fax: 91 124 435 4001

#### JAPAN

Graco K.K.  
1-27-12 Hayabuchi  
Tsuzuki-ku  
Yokohama City, Japan 2240025  
Tel: 81 45 593 7300  
Fax: 81 45 593 7301

#### KOREA

Graco Korea Inc.  
38, Samsung 1-ro 1-gil  
Hwaseong-si, Gyeonggi-do, 18449  
Republic of Korea  
Tel: 82 31 8015 0961  
Fax: 82 31 613 9801

All written and visual data contained in this document are based on the latest product information available at the time of publication.  
Graco reserves the right to make changes at any time without notice.

Graco is certified ISO 9001.



**Tecnologie e sistemi per la verniciatura**  
Via Mestri del lavoro 2, Castelfranco Emilia (Mo)



Europe  
+32 89 770 700  
FAX +32 89 770 777  
WWW.GRACO.COM